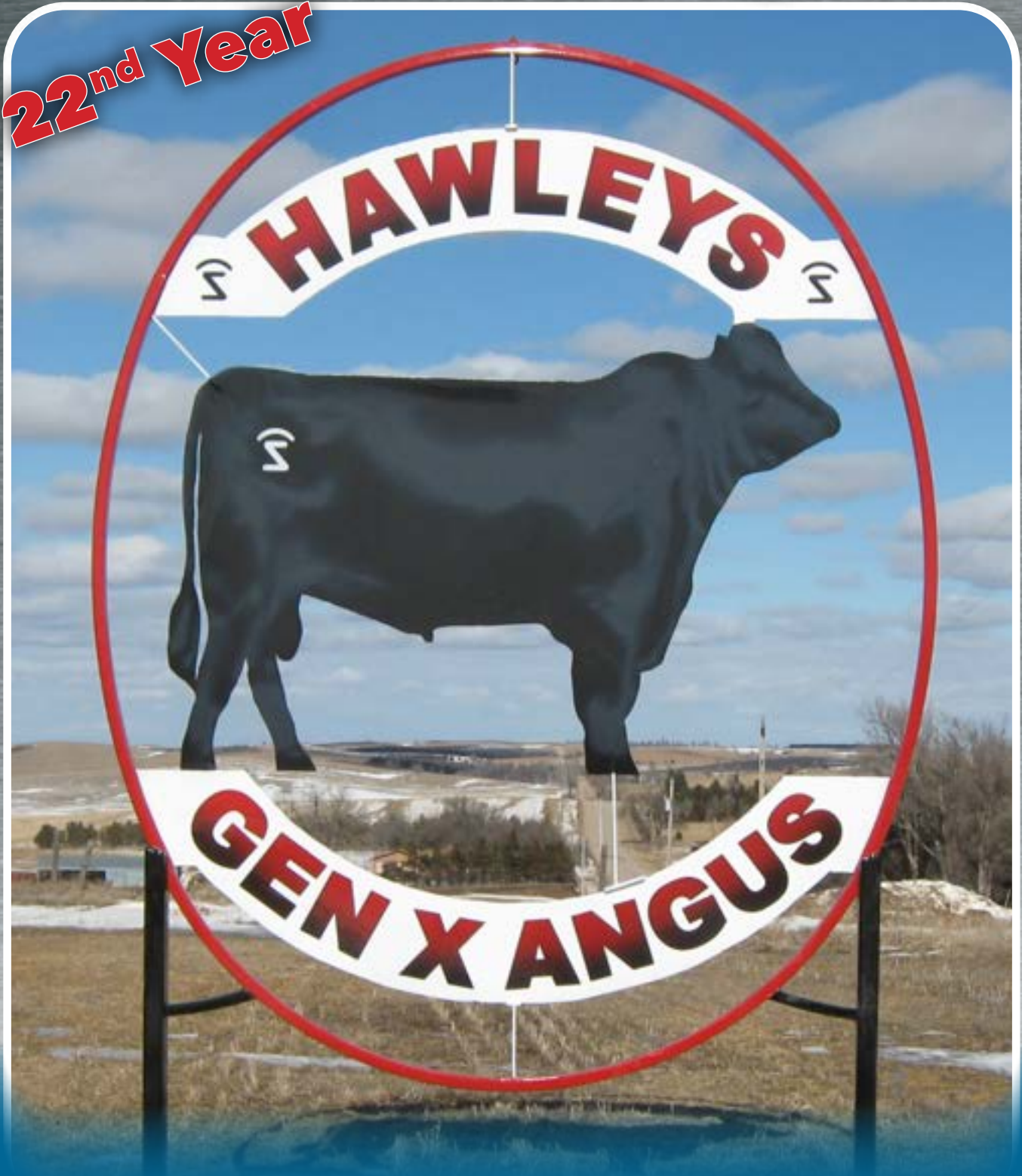


2025 Catalog

22nd Year



HAWLEYS GEN X ANGUS

Bulls for Sale by Private Treaty

www.hawleysgenxangus.com

HAWLEYS GEN X ANGUS

Bulls for Sale by Private Treaty

2025 Catalog

PHONE:

Bryan: 308 750 3460 (Cell)
(Text Available)

Gene: 308 789 6122 (anytime)

CONTACT US:

Please feel free to contact us at:
Bryan Hawley (Text or Call): 308 750 3460
Gene Hawley: 308 789 6122

PRICE RANGE:

\$4500 to \$8500

REGISTRATIONS:

Bull registrations will be transferred to you free of charge upon your request.

PAYMENT:

1/2 down when you select your bull, the remainder to be paid when you pick up the bull or the bull is delivered.

GUARANTEE:

Bulls selling for \$4,500 or more are guaranteed for 90 days from the first turnout against breeding injury. A credit of the purchase price less \$2,500 will be applied towards another bull if one is available, or if the buyer prefers, credit will be provided in the next year's sale. The buyer retains the salvage value of the injured bull, but is required to notify Hawleys Gen X Angus immediately so that inspection of the bull can take place. All notices must take place prior to September 1, 2025, and must include a letter of veterinary inspection pertaining to the injury including bull identification. This is not a mortality insurance policy, nor does it cover mismanagement or neglect. We do not cover injuries sustained prior to the breeding season if your bull is turned out with other bulls. We can assist you in retaining mortality insurance if you are interested.

DELIVERY:

Free delivery within 100 miles or deduct \$100 off purchase price of each bull if you are willing to haul your own.

BOARDING:

Free of charge boarding until May 1st.
After May 1st will incur a \$3 per day charge.

DISCOUNTS:

Volume \$100/bull, Repeat \$100/bull

Hello from the Hawleys!

How in the world is this already 2025?? Each year seems to go by faster than the last, yet we always have work to do. Once again, it is time to think about buying bulls. It seems like bull sales start earlier every year, so in an effort to give our customers the opportunity to see what we have to offer, we have put out our catalog listing the bulls we have for sale. Because the catalog is out earlier than usual, the ultrasound information is not available at the time of printing. We will provide that as a supplement sheet at the farm, when available. We are still selling them by private treaty at our farm north of Arcadia. This year, we are going to try something new and have what we term "Thank You Days" on February 21st and 22nd. We would like to invite all past, present, and hopefully future customers to join us for a chance to see the bulls, talk with friends, and share a meal.



The bulls we have for sale this year are the best we have produced. They are a very even group, with a variety of sires to choose from. We believe anyone can walk away with a bull they can be happy with. The bulls are not creep fed during the summer, or prior to weaning. After weaning, they are developed on a high roughage ration. Semen testing will be done mid-March. All bulls leaving the farm come with a first breeding season guarantee.

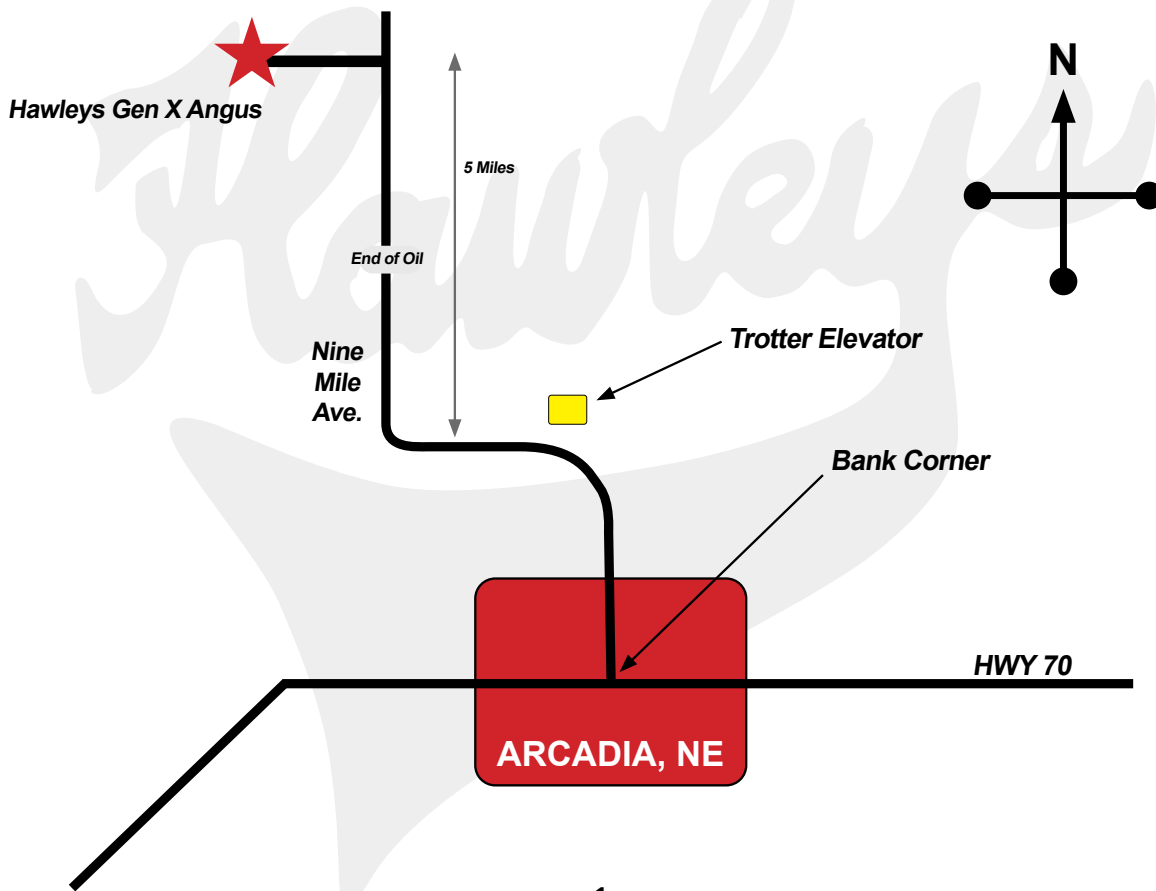
Now is when we get a chance to thank the people who help us all year long. Will Kirwan has been working for us 7 years now, and we are thankful to have him. Kaitie Masters is a big help with the catalog pictures, and has a LOT of patience. Butch McIntosh does a great job clipping our bulls. We work with some amazing veterinarians: Shari Sandoz, Sue Staab, and Randy Grint. Stephanie at Morris Press is a joy to work with, and does such a nice job laying out what we give her to put in the sale catalog. Thank you all!!!

Finally, thank you to those of you who purchase bulls from us. We wouldn't be able to put together a group of bulls like these without your past support. We hope to continue to keep your trust, and earn the trust of future customers as well. Please call, or text, with any questions about our bulls you may have. Hope to see you at the farm!

Sincerely,
Bryan Hawley

Bryan Hawley

Gene Hawley



Please join us for
HAWLEYS GEN X ANGUS
THANK YOU DAYS

Friday
February 21

&

Saturday
February 22

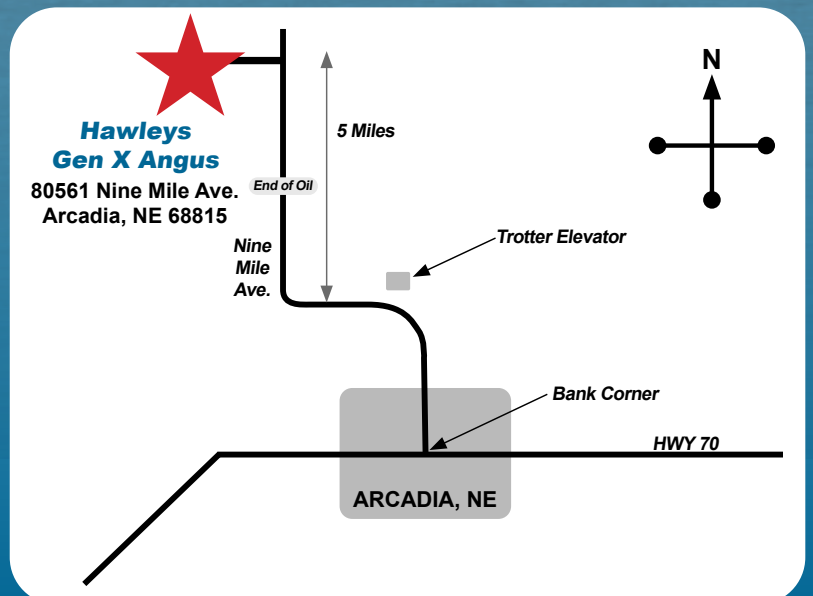
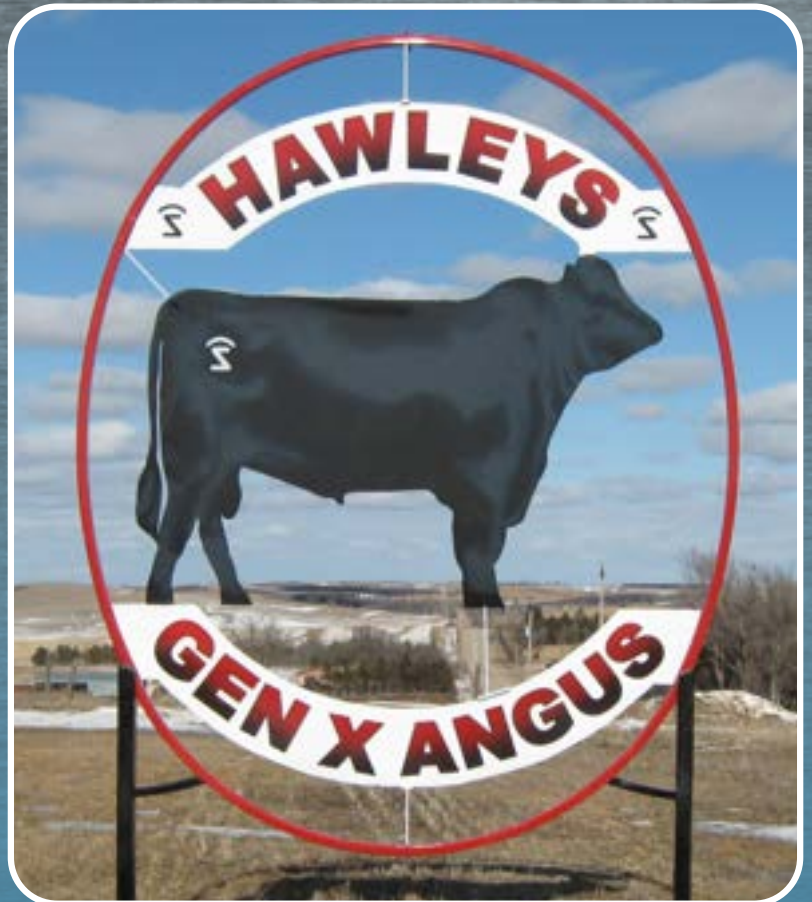
11:00am-4:00pm

(Snow Day February 23)

Bryan Hawley and his family
invite you to their farm
to view the bulls
and enjoy some food!

80561 Nine Mile Avenue
Arcadia, Nebraska

Questions? Call or Text
Bryan 308-750-3460



SIRE CRAWFORD GUARANTEE 9137

CONNELLY PAYRAISE

BASIN PAYWEIGHT 1682
PRIDE FAIR OF CONANGA 351

CRAWFORD MS ARMORY D40

CONNELLY ARMORY
G A R NEW DAY N2290

AAA #: 19526770



bw: +0 ww: +75 yw: +147 milk: +31

1 GEN X GUARANTEE 184

sired by: CRAWFORD GUARANTEE 9137 DOB: 01.20.24 DNR: 3-99

BALDRIDGE COMPOUND C367 SANDPOINT BUTKUS X797
BALDRIDGE BLACKCAP S959

GEN X BLOKES LASSIE 730

GEN X BLOKES LASSIE 574 G L F LEADER 9633
GEN X BLOKES LASSIE 399

***Use on Larger Heifers**

bw: +0.3 ww: +71 yw: +132 milk: +24

AAA #: 21104223

act BW:	84
adj 205:	659
ratio:	98
adj IMF:	
IMF ratio:	
adj REA:	
REA ratio:	
adj wt:	
ratio:	
EPD:	
\$B:	+132
\$C:	+249



2 GEN X GUARANTEE 214

sired by: CRAWFORD GUARANTEE 9137 DOB: 01.21.24 DNR: 3-104

BALDRIDGE COMPOUND C367 SANDPOINT BUTKUS X797
BALDRIDGE BLACKCAP S959

GEN X RITO LADY 1369

GEN X RITO LADY 105 BASIN EXCITEMENT
GEN X RITO LADY 663

act BW:	101
adj 205:	710
ratio:	105
adj IMF:	
IMF ratio:	
adj REA:	
REA ratio:	
adj wt:	
ratio:	
EPD:	
\$B:	+149
\$C:	+270

bw: +3.8 ww: +85 yw: +157 milk: +23

AAA #: 21104277



3 GEN X GUARANTEE 374

sired by: CRAWFORD GUARANTEE 9137 DOB: 01.26.24 DNR: 4-97

BALDRIDGE CONQUEST C298 FORTUNES CONQUEST 224
BALDRIDGE QUEEN PEGGY T53

GEN X RAINGIRL 309

GEN X RAINGIRL 1156 HOOVER EXCITEMENT M441
GEN X RAINGIRL 63

bw: +3.3 ww: +78 yw: +142 milk: +26

AAA #: 21104248

act BW:	105
adj 205:	694
ratio:	103
adj IMF:	
IMF ratio:	
adj REA:	
REA ratio:	
adj wt:	
ratio:	
EPD:	
\$B:	+140
\$C:	+263



4

GEN X GUARANTEE 454

sired by: CRAWFORD GUARANTEE 9137 DOB: 01.27.24 DNR: 3-92

BALDRIDGE COMPOUND C367 SANDPOINT BUTKUS X797
BALDRIDGE BLACKCAP S959

GEN X RITO LADY 670

GEN X RITO LADY 105 BASIN EXCITEMENT
GEN X RITO LADY 663

***Use on Heifers**

bw: +0.5 ww: +81 yw: +148 milk: +22

AAA #: 21104247

act BW:	80
adj 205:	711
ratio:	105
adj IMF:	
IMF ratio:	
adj REA:	
REA ratio:	
adj wt:	
ratio:	
EPD:	
\$B:	+139
\$C:	+261



5

GEN X GUARANTEE 734

sired by: CRAWFORD GUARANTEE 9137 DOB: 02.02.24 DNR: 5-112

G A R PROPHET C R A BEXTOR 872 5205 608
G A R OBJECTIVE 1885

GEN X EMULOUS LADY 126

GEN X EMULOUS LADY 654 G L F LEADER 9633
GEN X EMULOUS LADY 315

***Use on Heifers**

bw: +3.9 ww: +83 yw: +151 milk: +30

AAA #: 21098129

act BW:	105
adj 205:	733
ratio:	109
adj IMF:	
IMF ratio:	
adj REA:	
REA ratio:	
adj wt:	
ratio:	
EPD:	
\$B:	+153
\$C:	+274



SIRE SIEGEL BLACKHAWK 202

S A BLACKHAWK 69

CONNELY BLACKHAWK 6198
S A VICTORIA 52

COLEMAN DONNA 9337

COLEMAN RESOURCE 710
COLEMAN DONNA 4218

AAA #: 20388197



bw: +3.2 ww: +92 yw: +161 milk: +28

6

GEN X BLACKHAWK 254

sired by: SIEGEL BLACKHAWK 202 DOB: 01.23.24 DNR: 2-102

GEN X JUSTICE 958

SIMONSON JUSTICE 4121

GEN X RAINGIRL 1201

GEN X EMULOUS EDELLA 1021

GEN X EMULOUS EDELLA 426

KDS BULLSEYE A40

GEN X EMULOUS EDELLA 127

act BW:	95
adj 205:	737
ratio:	109
adj IMF:	
IMF ratio:	
adj REA:	
REA ratio:	
adj wt:	
ratio:	
EPD:	
\$B:	+128
\$C:	+238

bw: +4.6 ww: +85 yw: +146 milk: +28

AAA #: 21098394



7

GEN X BLACKHAWK 484

sired by: SIEGEL BLACKHAWK 202 DOB: 01.28.24 DNR: 2-107

HOOVER 38 SPECIAL S83

BALDRIDGE 38 SPECIAL

ELBAMERE QUEEN ELLSTON L258

GEN X RAINGIRL 821

GEN X RAINGIRL 26

CONNELY CAPITALIST 028

GEN X RAINGIRL 1284

act BW:	90
adj 205:	736
ratio:	109
adj IMF:	
IMF ratio:	
adj REA:	
REA ratio:	
adj wt:	
ratio:	
EPD:	
\$B:	+141
\$C:	+256

bw: +2.7 ww: +87 yw: +154 milk: +29

AAA #: 21098247



8

GEN X BLACKHAWK 704

sired by: SIEGEL BLACKHAWK 202 DOB: 02.01.24 DNR: 2-106

DEER VALLEY PATRIOT 3222

CONNELY CAPITALIST 028

DEER VALLEY RITA 0274

GEN X RAINGIRL 141

GEN X RAINGIRL 199

G A R PROPHET

GEN X RAINGIRL 527

act BW:	92
adj 205:	709
ratio:	105
adj IMF:	
IMF ratio:	
adj REA:	
REA ratio:	
adj wt:	
ratio:	
EPD:	
\$B:	+128
\$C:	+242

bw: +2.1 ww: +82 yw: +145 milk: +30

AAA #: 21098130



9 GEN X BLACKHAWK 974

sired by: SIEGEL BLACKHAWK 202 DOB: 02.10.24 DNR: 2-104

GLF FINAL PRODUCT 8562 GLF FINAL PRODUCT 1381
GLF ERICA 562

GEN X EMULOUS LADY 701

GEN X EMULOUS LADY 769 BALDRIDGE COMPOUND C367
GEN X EMULOUS LADY 1315

act BW:	95
adj 205:	723
ratio:	107
adj IMF:	
IMF ratio:	
adj REA:	
REA ratio:	
adj wt:	
ratio:	
EPD:	
\$B:	+132
\$C:	+238

bw: +3.7 ww: +83 yw: +150 milk: +29

AAA #: 21098216



10 GEN X BLACKHAWK 1334

sired by: SIEGEL BLACKHAWK 202 DOB: 03.07.24 DNR: 2-102

SIMONSON JUSTICE 4121 A A R HIGH FIVE 8563
SIMONSON BLACKCAP 9209

GEN X EMULOUS EDELLA 661

GEN X EMULOUS EDELLA 172 CONNEALY REWARD
GEN X EMULOUS EDELLA 330

act BW:	91
adj 205:	731
ratio:	108
adj IMF:	
IMF ratio:	
adj REA:	
REA ratio:	
adj wt:	
ratio:	
EPD:	
\$B:	+111
\$C:	+217

bw: +2.9 ww: +79 yw: +137 milk: +29

AAA #: 21098195



11 GEN X BLACKHAWK 1424

sired by: SIEGEL BLACKHAWK 202 DOB: 03.16.24 DNR: 2-105

BALDRIDGE CHAIRMAN FORTUNES CONQUEST 224
BALDRIDGE ISABEL B061

GEN X RITO LADY 81

GEN X RITO LADY 19 K C F BENNETT THEROCK A473
GEN X RITO LADY 1017

act BW:	100
adj 205:	735
ratio:	109
adj IMF:	
IMF ratio:	
adj REA:	
REA ratio:	
adj wt:	
ratio:	
EPD:	
\$B:	+134
\$C:	+245

bw: +4.1 ww: +87 yw: +151 milk: +29

AAA #: 21098122



SIRE HOOVER DETAIL Z28

GALAXY DETAIL 8546

DIABLO DELUXE 1104
GALAXY BLACKBIRD 4551

QUEEN OF ELLSTON R20

CONNELLY IMPACT
QUEEN OF ELLSTON C50

AAA #: 20125339



bw: +1.5 ww: +76 yw: +139 milk: +22

12 GEN X DETAIL 534

sired by: HOOVER DETAIL Z28 DOB: 01.30.24 DNR: 3-101

BASIN EXCITEMENT

BASIN EXPEDITION R156

BASIN LADY S532 AK

GEN X EMULOUS LADY 159

GEN X EMULOUS LADY 267

SIMONSON JUSTICE 4121

GEN X EMULOUS LADY 780

***Use on Heifers**

bw: -0.8 ww: +70 yw: +121 milk: +24

AAA #: 21131490

act BW:	81
adj 205:	693
ratio:	103
adj IMF:	
IMF ratio:	
adj REA:	
REA ratio:	
adj wt:	
ratio:	
EPD:	
\$B:	+141
\$C:	+265



13 GEN X DETAIL 584

sired by: HOOVER DETAIL Z28 DOB: 01.30.24 DNR: 4-103

G L F LEADER 9633

G L F LEADER 6427

G L F 4-BLACKBIRD 633

GEN X EMULOUS LADY 89

GEN X EMULOUS LADY 217

HOOVER EXCITEMENT M441

GEN X EMULOUS LADY 193

act BW:	89
adj 205:	657
ratio:	97
adj IMF:	
IMF ratio:	
adj REA:	
REA ratio:	
adj wt:	
ratio:	
EPD:	
\$B:	+157
\$C:	+275

bw: +0.4 ww: +64 yw: +121 milk: +26

AAA #: 21098123



14 GEN X DETAIL 904

sired by: HOOVER DETAIL Z28 DOB: 02.07.24 DNR: 6-107

HOOVER EXCITEMENT M441

BASIN EXCITEMENT

MISS BLACKBIRD ELLSTON G427

GEN X RITO LADO 1066

GEN X RITO LADY 663

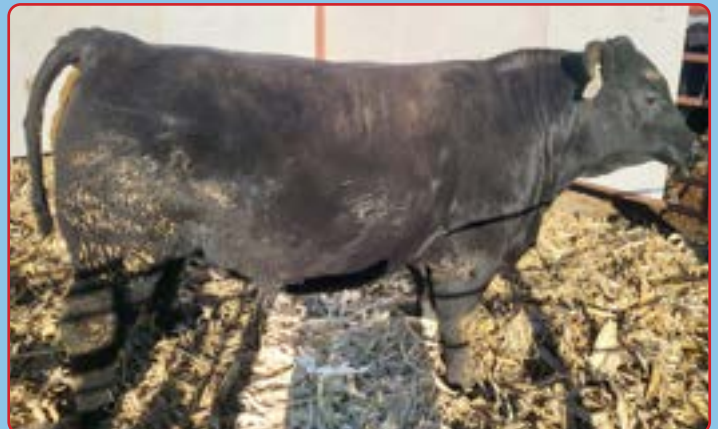
G L F LEADER 9633

GEN X RITO LADY 528

bw: +1.2 ww: +72 yw: +131 milk: +28

AAA #: 21098449

act BW:	90
adj 205:	734
ratio:	109
adj IMF:	
IMF ratio:	
adj REA:	
REA ratio:	
adj wt:	
ratio:	
EPD:	
\$B:	+162
\$C:	+282



15 GEN X DETAIL 914

sired by: HOOVER DETAIL Z28 DOB: 02.08.24 DNR: 4-101

BALDRIDGE CONQUEST 224 FORTUNES CONQUEST 224
BALDRIDGE QUEEN PEGGY T53

GEN X BLACKBIRD 269

GEN X BLACKBIRD 506 MSAR UPWARD 5141
BLACKBIRD OF ELLSTON E295

act BW:	90
adj 205:	660
ratio:	98
adj IMF:	
IMF ratio:	
adj REA:	
REA ratio:	
adj wt:	
ratio:	
EPD:	
\$B:	+144
\$C:	+262

bw: +0.2 ww: +65 yw: +115 milk: +25

AAA #: 21098171



16 GEN X DETAIL 1354

sired by: HOOVER DETAIL Z28 DOB: 03.07.24 DNR: 4-102

BASIN EXCITEMENT BASIN EXPEDITION R156
BASIN LADY S532 AK

GEN X RAMBLIN ROSE 249

GEN X RAMBLIN ROSE 107 G A R PROPHET
GEN X RAMBLIN ROSE 1115

act BW:	90
adj 205:	690
ratio:	102
adj IMF:	
IMF ratio:	
adj REA:	
REA ratio:	
adj wt:	
ratio:	
EPD:	
\$B:	+152
\$C:	+279

bw: +0.1 ww: +70 yw: +124 milk: +26

AAA #: 21098170



Papa Gene watching Logan and Bronson

SIRE S ARCHITECT 9501

SYDGEN BLUEPRINT

KM BROKEN BOW 002
SITZ FLORABELLE FANNY 4735

S BLOSSOM 7514

S WHITLOCK 179
S BLOSSOM 5525

AAA #: 193437622



bw: +0.5 ww: +98 yw: +167 milk: +26

17 GEN X ARCHITECT 34

sired by: S ARCHITECT 9501 DOB: 01.15.24 DNR: 4-102

HOOVER 38 SPECIAL

BALDRIDGE 38 SPECIAL

ELBAMERE QUEEN ELLSTON L258

GEN X EMULOUS EDELLA 1339

GEN X EMULOUS EDELLA 684

G L F LEADER 9633

GEN X EMULOUS EDELLA 149

***Use on Heifers**

bw: -0.5 ww: +81 yw: +135 milk: +25

AAA #: 21132253

act BW:	81
adj 205:	719
ratio:	107
adj IMF:	
IMF ratio:	
adj REA:	
REA ratio:	
adj wt:	
ratio:	
EPD:	
\$B:	+159
\$C:	+302



18 GEN X ARCHITECT 74

sired by: S ARCHITECT 9501 DOB: 01.16.24 DNR: 7-95

HOOVER EXCITEMENT M441

BASIN EXCITEMENT

MISS BLACKBIRD ELLSTON G427

GEN X MISS BLACKCAP 916

GEN X MISS BLACKCAP 73

G L F LEADER 9633

GEN X MISS BLACKCAP 421

act BW:	82
adj 205:	639
ratio:	95
adj IMF:	
IMF ratio:	
adj REA:	
REA ratio:	
adj wt:	
ratio:	
EPD:	
\$B:	+138
\$C:	+281

***Use on Heifers**

bw: -1.5 ww: +70 yw: +116 milk: +24

AAA #: 21132270



19 GEN X ARCHITECT 84

sired by: S ARCHITECT 9501 DOB: 01.17.24 DNR: 7-100

KDS BULLSEYE A40

MOGCK BULLSEYE

KEYMURA KATY ELLSTON J8

GEN X ELBAMERE QUEEN 836

GEN X ELBAMERE QUEEN 62

CONNEALY REWARD

GEN X ELBAMERE QUEEN 80

***Use on Heifers**

bw: +0.4 ww: +78 yw: +125 milk: +24

AAA #: 21132271

act BW:	83
adj 205:	695
ratio:	103
adj IMF:	
IMF ratio:	
adj REA:	
REA ratio:	
adj wt:	
ratio:	
EPD:	
\$B:	+147
\$C:	+293



20 GEN X ARCHITECT 694

sired by: S ARCHITECT 9501 DOB: 02.01.24 DNR: 3-93

SIMONSON JUSTICE 4121 A A R HIGH FIVE 8563
SIMONSON BLACKCAP 9209

GEN X EMULOUS LASSIE 1049

GEN X EMULOUS LASSIE 30 CONNEALY REWARD
GEN X EMULOUS LASSIE 30

***Use on Heifers**

bw: -0.2 ww: +71 yw: +113 milk: +23

AAA #: 21132254

act BW:	86
adj 205:	649
ratio:	96
adj IMF:	
IMF ratio:	
adj REA:	
REA ratio:	
adj wt:	
ratio:	
EPD:	
\$B:	+127
\$C:	+270



21 GEN X ARCHITECT 774

sired by: S ARCHITECT 9501 DOB: 02.03.24 DNR: 8-102

SIMONSON JUSTICE 4121 A A R HIGH FIVE 8563
SIMONSON BLACKCAP 9209

GEN X BLOKES LASSIE 1265

GEN X BLOKES LASSIE 691 H&K GRIDIRON D54
GEN X BLOKES LASSIE 204

***Use on Heifers**

bw: +0.0 ww: +70 yw: +116 milk: +24

AAA #: 21132273

act BW:	85
adj 205:	632
ratio:	94
adj IMF:	
IMF ratio:	
adj REA:	
REA ratio:	
adj wt:	
ratio:	
EPD:	
\$B:	+136
\$C:	+264



Bryan and Gene always find some time to play in the dirt!

22 GEN X ARCHITECT 824

sired by: S ARCHITECT 9501 DOB: 02.04.24 DNR: 7-108

CONNEALY CAPITALIST 028 S A V FINAL ANSWER 0035
PRIDES PITA OF CONANGA 8821

GEN X RAINGIRL 26

GEN X RAINGIRL 1284 G L F LEADER 9633
GEN X RAINGIRL 199

***Use on Heifers**

bw: -0.8 ww: +76 yw: +129 milk: +25

AAA #: 21132268

act BW:	81
adj 205:	665
ratio:	99
adj IMF:	
IMF ratio:	
adj REA:	
REA ratio:	
adj wt:	
ratio:	
EPD:	
\$B:	+150
\$C:	+291



SIRE KROUPALS B&B PAYRAISE 907

ICC PAY RAISE 4886

MILL COULEE PAY RAISE
ICC BLACKBIRD 0739

B&B ZARA 5060

SITZ BLUFF 270
B&B ZARA 3017

AAA #: 19596336



bw: +3.5 ww: +78 yw: +134 milk: +19

23 GEN X PAYRAISE 604

sired by: KROUPALS B&B PAYRAISE 907 DOB: 01.30.24 DNR: 6-102

G L F FINAL PRODUCT 3149

CONNELLY FINAL PRODUCT
G L F BEAUTY 149

GEN X RAINGIRL 457

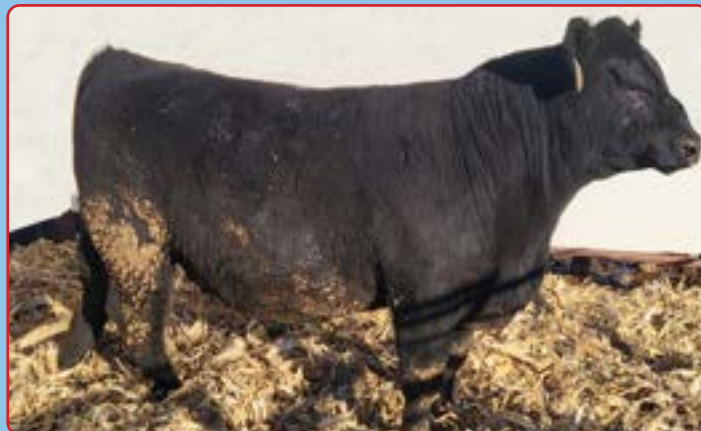
GEN X RAINGIRL 1074

G L F LEADER 9633
GEN X RAINGIRL 478

act BW:	102
adj 205:	659
ratio:	98
adj IMF:	
IMF ratio:	
adj REA:	
REA ratio:	
adj wt:	
ratio:	
EPD:	
\$B:	+144
\$C:	+256

bw: +4.4 ww: +69 yw: +126 milk: +22

AAA #: 21098173



24 GEN X PAYRAISE 724

sired by: KROUPALS B&B PAYRAISE 907 DOB: 02.02.24 DNR: 5-112

MSAR UPWARD 5141

SITZ UPWARD 307R
MSAR PRIDE 179

GEN X BLACKBIRD 907

GEN X BLACKBIRD 759

H&K GRIDIRON E55
GEN X BLACKBIRD 436

act BW:	72
adj 205:	662
ratio:	98
adj IMF:	
IMF ratio:	
adj REA:	
REA ratio:	
adj wt:	
ratio:	
EPD:	
\$B:	+131
\$C:	+247

*Use on Heifers

bw: -0.5 ww: +63 yw: +108 milk: +22

AAA #: 21098366



25 GEN X PAYRAISE 814

sired by: KROUPALS B&B PAYRAISE 907 DOB: 02.03.24 DNR: 7-101

SIMONSON JUSTICE 4121

A A R HIGH FIVE 8563
SIMONSON BLACKCAP 9209

GEN X MISS ERICA 1056

GEN X MISS ERICA 1021

H&K GRIDIRON E55
MISS ERICA ELLSTON C23

act BW:	85
adj 205:	740
ratio:	110
adj IMF:	
IMF ratio:	
adj REA:	
REA ratio:	
adj wt:	
ratio:	
EPD:	
\$B:	+130
\$C:	+244

bw: +0.6 ww: +70 yw: +115 milk: +22

AAA #: 21098448





26 GEN X PAYRAISE 834

sired by: KOUPALS B&B PAYRAISE 907 DOB: 02.05.24 DNR: 6-95

SIMONSON JUSTICE 4121 A A R HIGH FIVE 8563
SIMONSON BLACKCAP 9209

GEN X RAINGIRL 527

GEN X RAINGIRL 1201 H&K CC&7 G56
GEN X RAINGIRL 247

act BW:	90
adj 205:	642
ratio:	95
adj IMF:	
IMF ratio:	
adj REA:	
REA ratio:	
adj wt:	
ratio:	
EPD:	
\$B:	+133
\$C:	+247

bw: +2.2 ww: +64 yw: +112 milk: +21

AAA #: 21098175



27 GEN X PAYRAISE 1234

sired by: KOUPALS B&B PAYRAISE 907 DOB: 02.23.24 DNR: 5-106

HOOVER EXCITEMENT M441 BASIN EXCITEMENT
MISS BLACKBIRD ELLSTON G427

GEN X MISS BLACKCAP 1067

GEN X MISS BLACKCAP 73 G L F LEADER 9633
GEN X MISS BLACKCAP 421

act BW:	97
adj 205:	723
ratio:	107
adj IMF:	
IMF ratio:	
adj REA:	
REA ratio:	
adj wt:	
ratio:	
EPD:	
\$B:	+143
\$C:	+263

bw: +3.2 ww: +73 yw: +125 milk: +26

AAA #: 21098450



SIRE GEN X JUSTICE 958

SIMONSON JUSTICE 4121

AAR HIGH FIVE 8563
SIMONSON BLACKCAP 9209

GEN X RAINGIRL 1201

H&K CC & 7 G56
GEN X RAINGIRL 247

AAA #: 19315337



bw: +3.4 ww: +69 yw: +115 milk: +22

28 GEN X JUSTICE 958 294

sired by: GEN X JUSTICE 958 DOB: 01.24.24 DNR: 5-93

HOOVER EXCITEMENT K175 BASIN EXCITEMENT
BLKCP EMPRESS ELLSTON H142

GEN X EMULOUS LASSIE 198

GEN X EMULOUS LASSIE 46 G A R PROPHET
GEN X EMULOUS LASSIE 424

act BW:	90
adj 205:	621
ratio:	92
adj IMF:	
IMF ratio:	
adj REA:	
REA ratio:	
adj wt:	
ratio:	
EPD:	
\$B:	+146
\$C:	+264

bw: +2.7 ww: +69 yw: +125 milk: +21

AAA #: 21098150



29 GEN X JUSTICE 958 574

sired by: GEN X JUSTICE 958 DOB: 01.30.24 DNR: 7-107

HOOVER EXCITEMENT M441 BASIN EXCITEMENT
MISS BLACKBIRD ELLSTON G427

GEN X BLOKES LASSIE 816

GEN X BLOKES LASSIE 603 G L F LEADER 9633
GEN X BLOKES LASSIE 538

act BW:	104
adj 205:	648
ratio:	96
adj IMF:	
IMF ratio:	
adj REA:	
REA ratio:	
adj wt:	
ratio:	
EPD:	
\$B:	+149
\$C:	+262

bw: +4.3 ww: +63 yw: +116 milk: +25

AAA #: 21098221



30 GEN X JUSTICE 958 784

sired by: GEN X JUSTICE 958 DOB: 02.03.24 DNR: 4-100

HOOVER BULLSEYE M42 MOGCK BULLSEYE
KEYMURA KATY ELLSTON J8

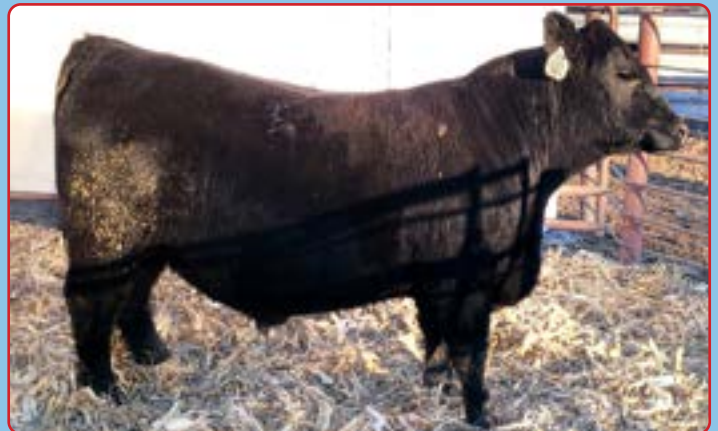
GEN X MISS BLACKCAP 1189

GEN X MISS BLACKCAP 630 TC TOTAL 410
MISS BLACKCAP ELLSTON A350

act BW:	91
adj 205:	663
ratio:	98
adj IMF:	
IMF ratio:	
adj REA:	
REA ratio:	
adj wt:	
ratio:	
EPD:	
\$B:	+146
\$C:	+266

bw: +2.6 ww: +63 yw: +107 milk: +26

AAA #: 21098455



SIRE BALDRIDGE CHAIRMAN

FORTUNES CONQUEST 224

CONNELLY CONFIDENCE 0100
FORTUNES 4412 ETHELDA 742

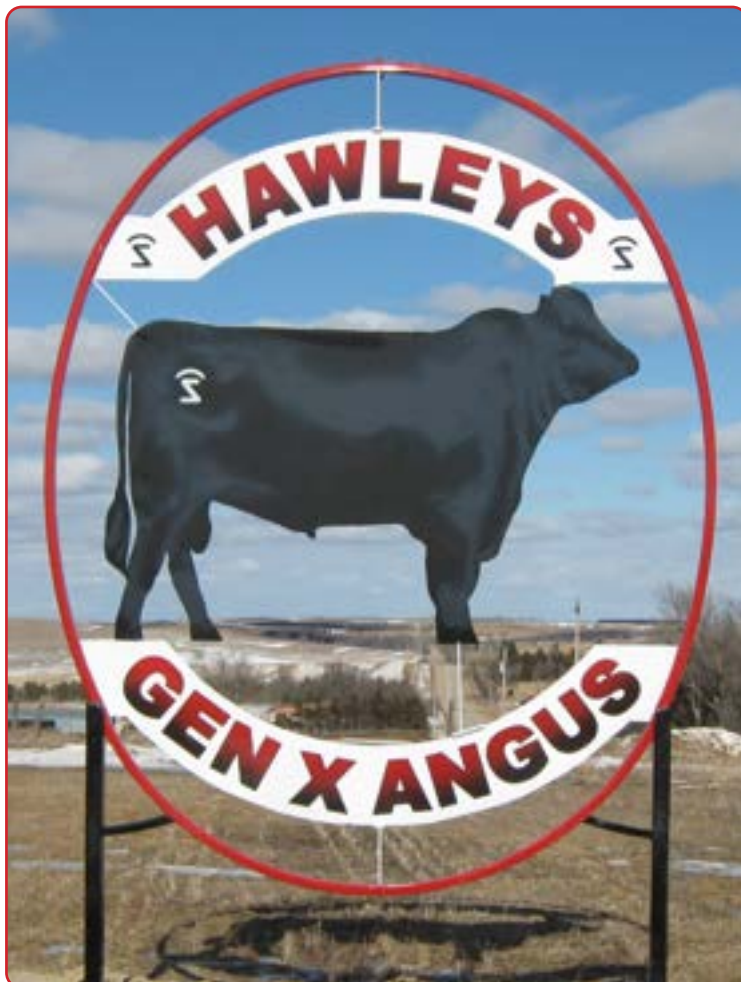
BALDRIDGE ISABEL B061

G A R PROPHET
BALDRIDGE ISABEL Y69

AAA #: 18587751



bw: -1.6 ww: +70 yw: +120 milk: +30



31 GEN X CHAIRMAN 204

sired by: BALDRIDGE CHAIRMAN DOB: 01.21.24 DNR: 1-95

HOOVER 38 SPECIAL S83 BALDRIDGE 38 SPECIAL
ELBAMERE QUEEN ELLSTON L258

GEN X JESSICA 1222

GEN X JESSICA 244 G L F LEADER 9633
JESSICA OF ELLSTON F256

act BW:	85
adj 205:	641
ratio:	95
adj IMF:	
IMF ratio:	
adj REA:	
REA ratio:	
adj wt:	
ratio:	
EPD:	
\$B:	+145
\$C:	+264

bw: +1.1 ww: +68 yw: +120 milk: +25

AAA #: 21098456



32 GEN X CHAIRMAN 224

sired by: BALDRIDGE CHAIRMAN DOB: 01.22.24 DNR: 1-99

S A V RAINFALL 6846 COLEMAN CHARLO 0256
S A V BLACKCAP MAY 4136

GEN X BLUEBLOOD LADY 82

GEN X BLUEBLOOD LADY 480 GEN X JUSTICE 958
GEN X BLUEBLOOD LADY 532

act BW:	79
adj 205:	667
ratio:	99
adj IMF:	
IMF ratio:	
adj REA:	
REA ratio:	
adj wt:	
ratio:	
EPD:	
\$B:	+141
\$C:	+260

***Use on Heifers**

bw: +0.0 ww: +67 yw: +116 milk: +28

AAA #: 21099353



33 GEN X DUKE 264

DOB: 01.23.24 DNR: 1-94

B BAR WINDY 7 3575 B BAR WINDY 79
 MILLARS DUKE 816 B BAR EULIMA 357
 MILLARS QUEEN LASS 5273 TOMBSTONE 050
 BALDRIDGE CONQUEST C298 FORTUNES CONQUEST 224
GEN X BLUERIBBON HEIRESS 1082 BALDRIDGE QUEEN PEGGY T53
 GEN X BLUERIBBON HEIRESS 212 CONNEALLY REWARD
 GEN X BLUERIBBON HEIRESS 470

act BW:	78
adj 205:	633
ratio:	94
adj IMF:	
IMF ratio:	
adj REA:	
REA ratio:	
adj wt:	
ratio:	
EPD:	
\$B:	+117
\$C:	+235

***Use on Heifers**

bw: +0.4 ww: +69 yw: +117 milk: +24

AAA #: 21099507



34 GEN X NEXTGEN 392 1304

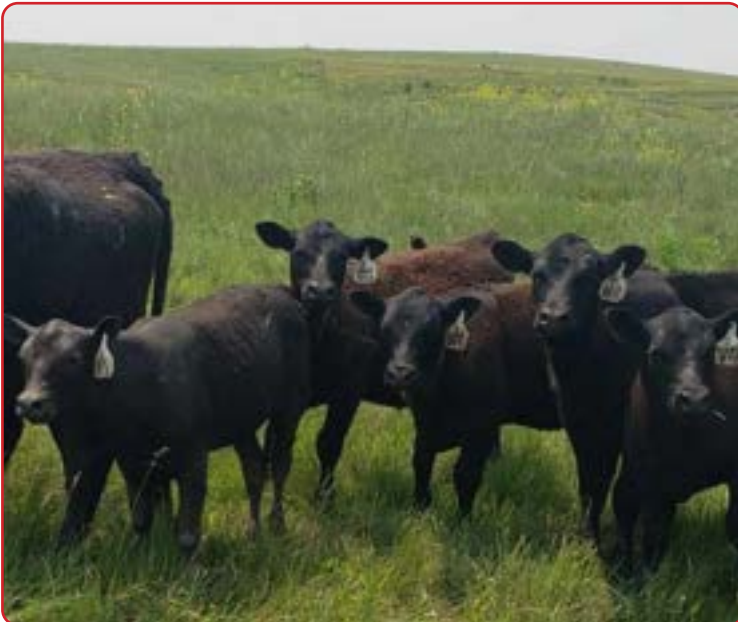
DOB: 03.02.24 DNR: 3-100

SYDGEN NEXTGEN VA R GENERATION 2100
GEN X NEXTGEN 392 SYDGEN RITA 4387
 GEN X RITO LADY 119 BASIN EXCITEMENT
 BALDRIDGE CONQUEST C298 GEN X RITO LADY 307
GEN X BLOKES LASSIE 1140 FORTUNES CONQUEST 224
 GEN X BLOKES LASSIE 816 BALDRIDGE QUEEN PEGGY T53
 HOOVER EXCITEMENT
 GEN X BLOKES LASSIE 603

act BW:	96
adj 205:	685
ratio:	101
adj IMF:	
IMF ratio:	
adj REA:	
REA ratio:	
adj wt:	
ratio:	
EPD:	
\$B:	+155
\$C:	+286

bw: +2.9 ww: +70 yw: +121 milk: +24

AAA #: 21098453



Thank you!

Hawleys

WE KNEW HE'D BE A FARMER...

At a very early age Bryan was fascinated with tractors and equipment. He spent a lot of time riding in the tractor with anyone who would take him. That was lucky for me, his mom, because I was definitely challenged when it came to running a tractor. I mean, there was a reason I did the milking and no field work.

One day Rick called home and told me to get the tractor and grinder mixer backed into the pole shed as it was going to rain. So, the dutiful wife that I am, I went out there and tried and tried to back it in straight, but there was no way I was getting it done. So, I went into the house and got my seven year old son and on the way out he says "just do what I tell you". I did what he told me and backed it in the very first time.

We had a 560 farm hand tractor that we used to fill the feed wagon for the milk cows and it was very cold-blooded. I cannot tell you how many times Rick came in the barn or house with his beard nothing but ice cicles and his hands frozen because he'd been trying to get that thing started. I knew if he asked me to pull him, it was a last resort because honestly, I was really bad. It was such a blessing when Bryan took over for me. It may have saved Ricks' and my marriage.

It wasn't long and Bryan was hauling silage, packing it, and then he took over running the cutter. If it hadn't been for football, I'm not sure he would have gone to school at all in the fall. He loved working with our neighbors Leonard Hruby and Eugene Pokorny, who would help haul silage, as well as his grandpa Gene, Grandma Jeanie, and his dad.

You look at Bryan and see this big man who doesn't back down to much of anything. But let me tell you about a little blonde Bryan around three years old. We were branding and vaccinating cattle, and he was in the back end of the pickup. Rick had the branding iron, and of course the smoke is smelly and a cow let out a beller. We heard something hit the side of the pickup and then we see this little boy running for dear life to get away. He had bailed over the side of the pickup box and his little legs were taking him up the driveway as fast as they could go. That may be the one and only time a cow sent him running.

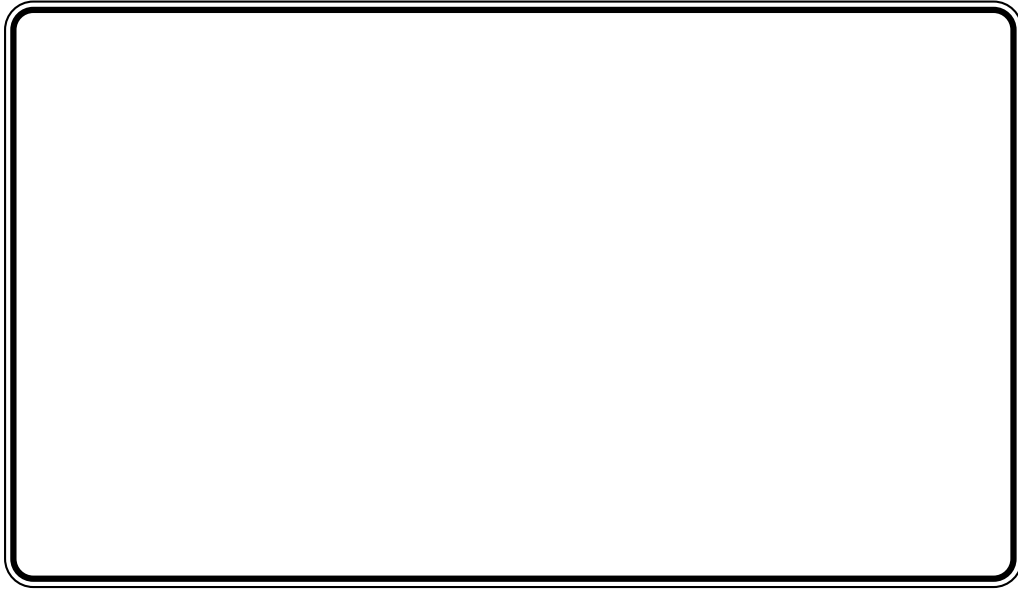
At around age 15 he was sent over to help Grandpa Gene and Grandma Jeanie, and thirty-three years later he's still there! But the roles have changed a bit. His 85-year-old grandfather spends most of his energy helping Bryan. That's the beauty of a family farm, the generations working and playing and praying together.

Susan Hawley



Hawleys Gen X Angus
80561 Nine Mile Ave.
Arcadia, NE 68815

RETURN SERVICE GUARANTEED



 **MORRIS PRESS**

Catalog designed and printed by Morris Press
308.234.2991 • Kearney, Nebraska